



intelligent boxes



Quality, Design, Innovation  
What makes us stand out

Highest quality standards, modern design and constant innovations - this product philosophy, combined with a high level of service make Renz the market leader.

1

### Highest quality

First-class materials, sophisticated and ultra-modern production methods guarantee the highest quality.

2

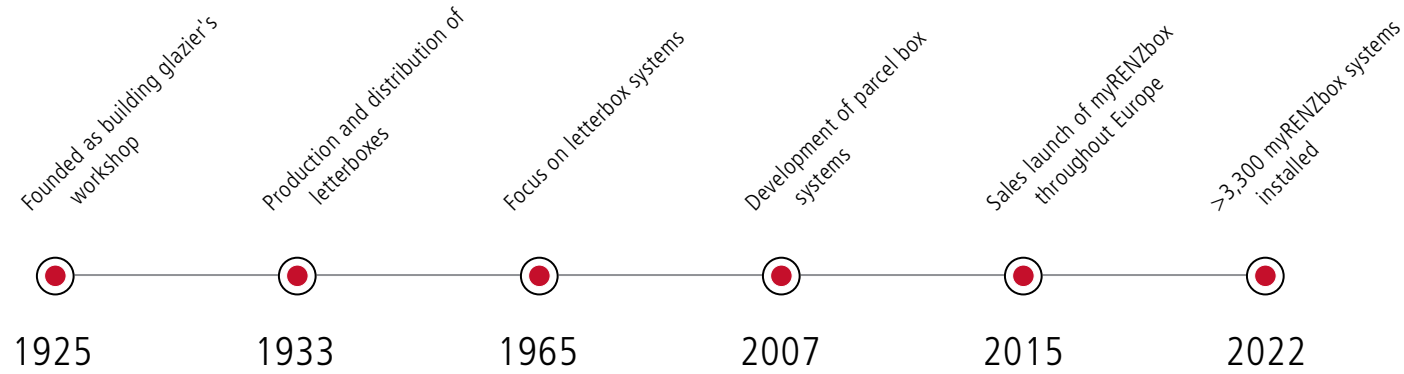
### Constant innovation

Renz is constantly developing its products further. Thanks to precise market analyses and technical innovations, the products are ahead of their time.

3

### Timeless design

Renz stands for high-quality and timeless design. Many products have won prizes for their styling, such as the German Design Award.



"A modern letterbox is no longer just for receiving mail. It integrates the parcel reception of all delivery services, bells, video, access control and much more. As a result, it serves us for a lifetime."  
Armin Renz, Managing Director



4

### Focus "Sustainability"

Continuously improve the durability of product quality, invest in manufacturing processes and business processes with the aim of reducing goal of CO2- neutrality - that is what sustainability means at Renz.

5

### Owner-managed family business

Founded in 1925 in Kirchberg an der Murr the family business is owner-managed in the hands of the third generation. Swabian inventiveness meets state-of-the-art manufacturing methods at Renz.

6

### Order-related production

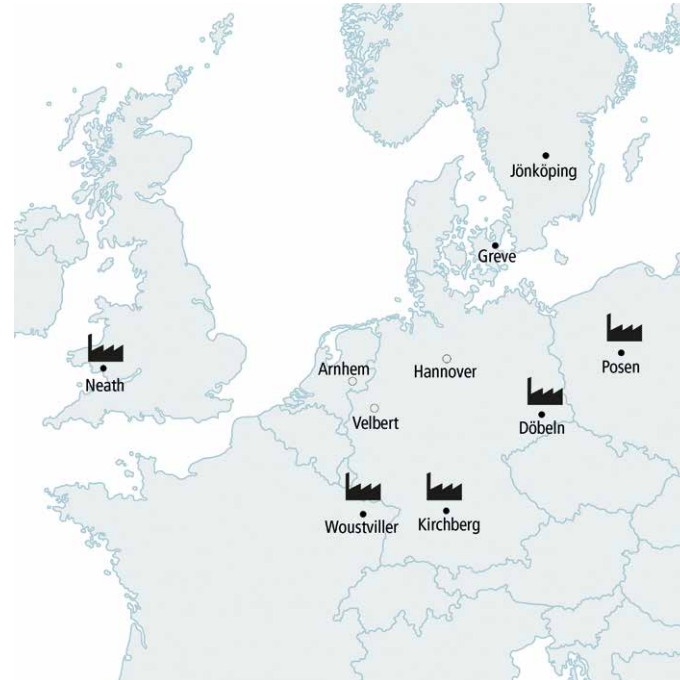
Renz offers the right product for every need. Letter and parcel box systems can be fully customised and are manufactured made to order according to customer requirements.



A special highlight: the reduced product design of RENZ PLAN S with its absolutely flat surface and linear surface and the straight-lined appearance was awarded the German Design Award.







**7**  
At home in Europe

Renz is at home Renz at 9 European locations. Market-adapted products and comprehensive know-how about country-specific features and standards are available to customers.

**8**  
Nationwide Distribution network


A large network of office and sales representatives, specialist dealers and other sales partners advises and supports Renz customers in the planning and realisation of their systems.

**9**  
Customer-oriented after-sales service

At Renz, product, planning and service come from a single source. Even after the purchase of a product, customers have a personal contact person on site to provide advice and assistance.

**10**  
European market leadership

For decades, Renz has been the market leader in the field of letter and parcel boxes. The products have proven themselves a million times in practice.



Decades of experience makes Renz a particularly competent and reliable partner.

Property developers, architects and house owners prefer solutions from Renz when it comes to letterboxes. Because quality, function and service have proven themselves in practice for decades.

**1**  
Patented Insertion flap

The Renz System Flap (RSK) contributes to both the aesthetics and the functionality of the letterboxes. It enables silenced closing, keeps the box closed in windy conditions and drains rainwater.

**2**  
Optimum box size

Almost all Renz letterboxes comply with the DIN standard EN 13724, which guarantees the safe delivery of letters of all common formats, without having to be bent. In addition, there is sufficient storage space even for higher mail volumes.

**3**  
Embossed fronts

Fronts and inserts from Renz letterbox systems are embossed, not punched. This not only a visual improvement, but also leads to greater stability and better protection from corrosion.





4

## Guaranteed durable

Due to their high manufacturing quality, Renz letterboxes are companions for life. The high-quality materials, such as Galfan or V4A stainless steel, also contribute to this. Spare parts are available for up to 40 years. Renz offers a 15-year guarantee for rust damage.

5

## Simple assembly

Renz supplies the assembly instructions with the custom-fit offer for the desired letterbox system - this means that the necessary precautions can be taken at an early stage. The practical design allows components to be easily replaced even after commissioning.

6

## Wide product range

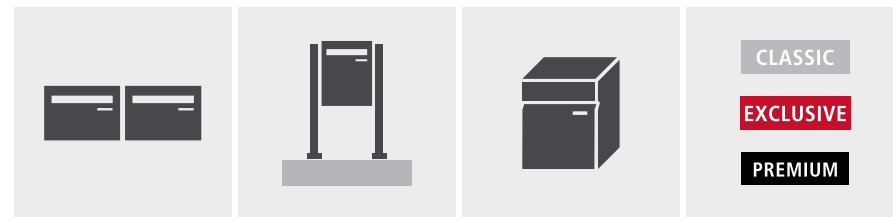
Thanks to the wide range of products, Renz has something for every need and every installation situation and every budget. The price and technical differentiation is reflected in the product lines CLASSIC, EXCLUSIVE and PREMIUM.

System size

Installation type

Box size

Product line



Individually configure the right letter and parcel box system for your project: [www.renzkonfigurator.de](http://www.renzkonfigurator.de)

7

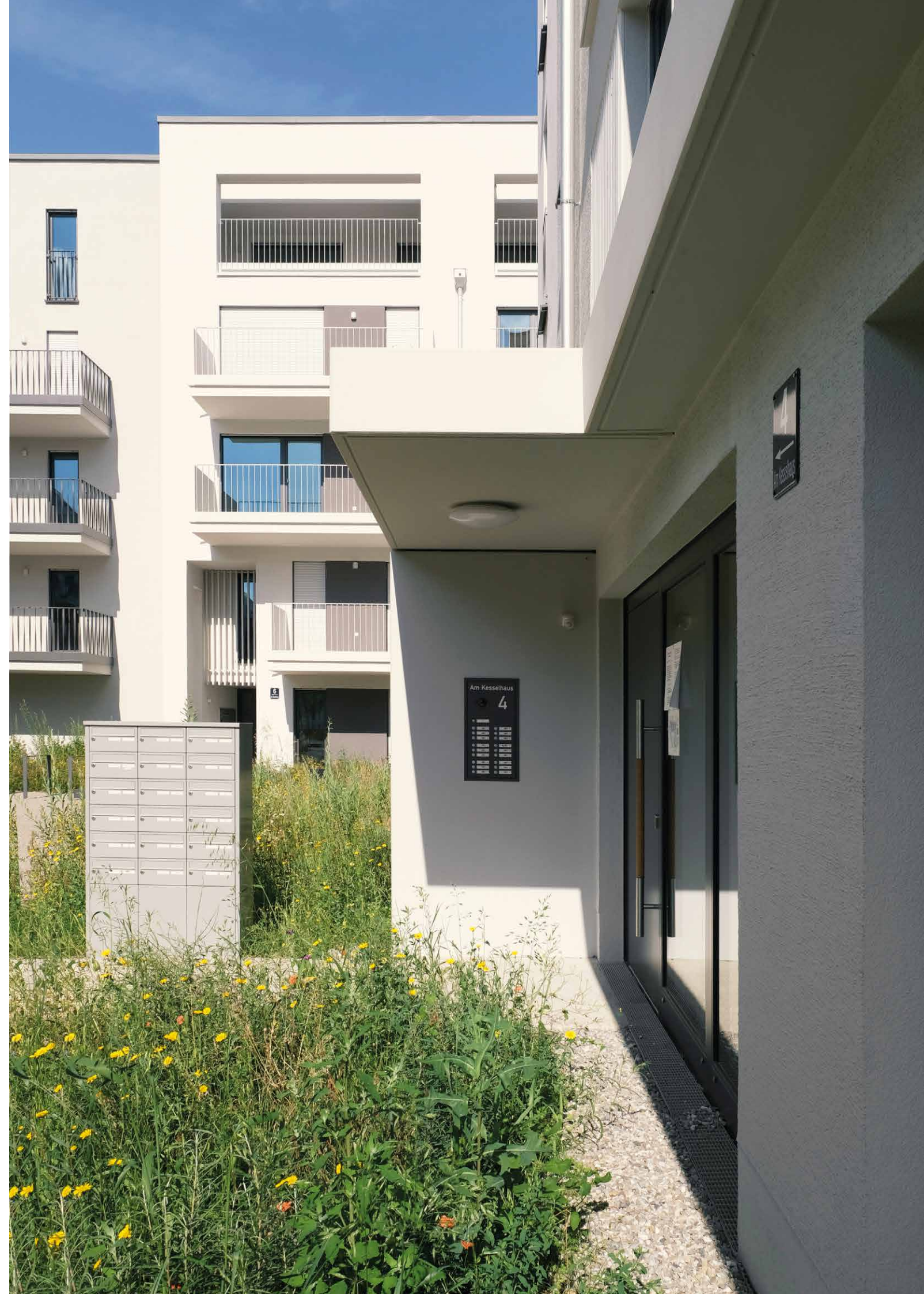
## Individually configured

A Renz letterbox system is tailored precisely to the customer's requirements. The shape of the box and the arrangement of the modules can be freely selected. There are over 200 colours to choose from. Even special requests can also be realised as special designs.

8

## Well protected

Thanks to their stability, Renz letterboxes are protected against vandalism. Other product features such as internal screws for floor mounting or the special design of the name and bell plates add to the security.







Everyone benefits from an intelligent letter and parcel box system: building owners enjoy the increased value of the property, the administration has less work and users can enjoy a versatile transfer solution.

9

### Renowned partner

Modules such as camera, fingerprint scanner or code keypad are now standard in many modern letterbox systems. Renz cooperates with well-known manufacturers such as Gira, Siedle, ELCOM or TCS and many more.



10

### Special processing

One of the trademarks of Renz letterbox systems are the deep-drawn components, such as the slot or flap suspension. As a result of this, as well as special production techniques, Renz lives up to its claim of manufacturing particularly durable products.

11

### Digital Innovations

Renz mailbox systems are available with electronic lock, digital nameplate and digital bell. This simplifies management and ensures a modern, tidy appearance at the entrance to the building.

12

### Parcel boxes can be integrated

Renz is responding to the growing flood of parcels with new solutions. Intelligent parcel boxes can be integrated into a letterbox system during the planning stage. A parcel box system can also be added to the letterbox system at a later date.

1

### Digital all-in-one solution

The intelligent myRENZbox combines all the important building blocks of the digital home entrance: letter and parcel boxes with electronic locks, digital nameplates, digital doorbells and a touch screen that can also serve as an info board.

2

### Individually designable

More than 200 RAL colours as well as the possibilities of foiling and engraving make the myRENZbox also optically to a completely individual product. Screen design and monitor size can also be adapted to the respective needs.

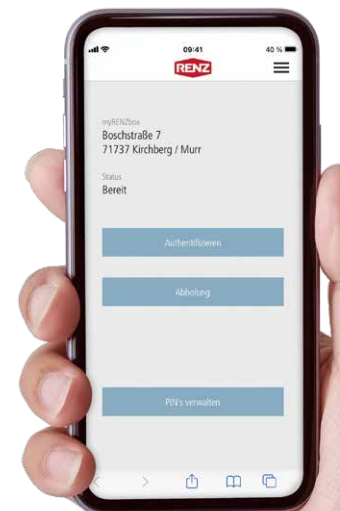
3

### From a single source

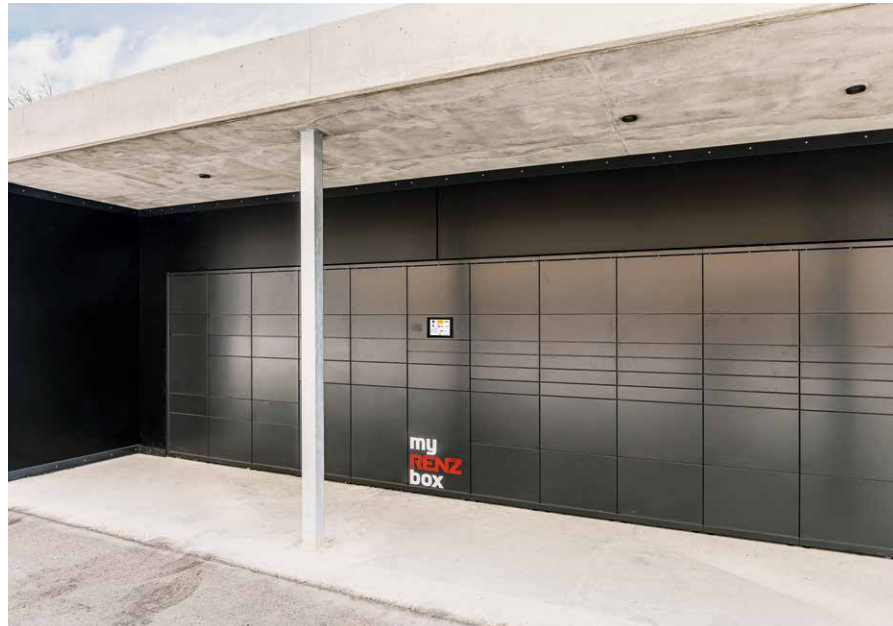
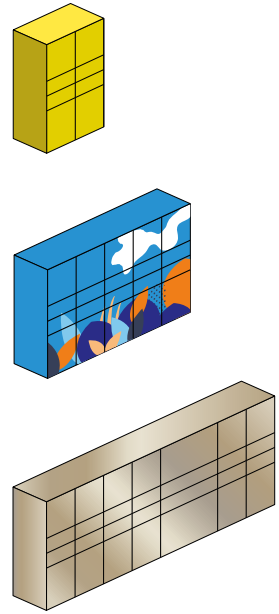
From consultation and planning production to installation and commissioning - a Renz expert personally accompanies the customer every step of the way. Also maintenance and service of the myRENZbox come directly from Renz.



Whether with pin, app or key transponder: The myRENZbox can be opened conveniently.







4

## Perfectly integrated

Thanks to open interfaces, a wide variety of systems can be integrated into the world of the myRENZbox - from the doorbell camera to the access control system to the ERP solution of the administration, various scenarios are possible.

5

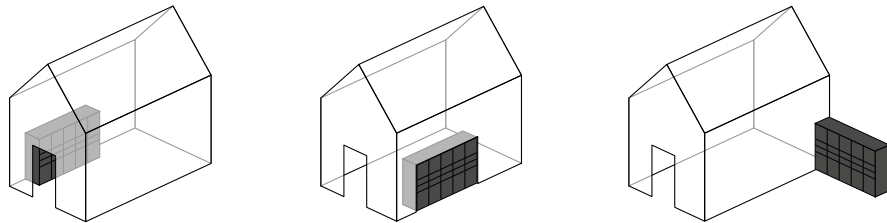
## Constant innovation

Both the hardware and the software of the myRENZbox are in-house developments. All components are manufactured by Renz in Europe. A special team of developers regularly provides new functional enhancements.

6

## Always fitting

Thanks to the box-based design, the myRENZbox adapts completely to the requirements. Indoor and outdoor variants are possible. The combination of letter and parcel box systems makes the digital entrance become a reality.



Indoor or outdoor, in the entrance to the house, centrally in the neighbourhood or directly at the door. You determine the location of the myRENZbox individually.





7

## Extendable system

Thanks to the modular system the my-RENZbox adapts to individual needs: It can be expanded at any time as the volume of mail grows. Mobile collection systems also offer temporary use - with complete flexibility in terms of placement.

8

## Infinite uses

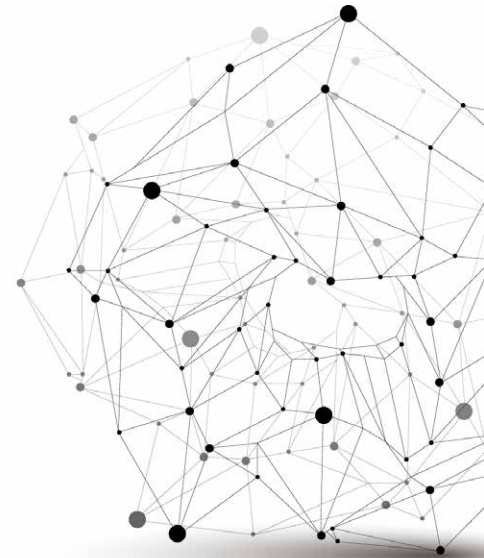
Whether it's a parcel station, locker or transfer platform - with the myRENZbox there are no limits to the ideas for use. In the version with temperature-controlled compartments it is even suitable for cooling drinks at the next farm festival.

9

## Years of experience

Already today, more than 3,300 intelligent letter and parcel boxes from Renz are already in use across Europe. The myRENZbox has proven itself in practice and is constantly being and further developed thanks to growing experience.

### Renz Digital Plattform



Fast.  
Slim.  
Successful.

## Informative seminars

Whether remotely or on site, whether on products or tools - the extensive range of training courses offered by Renz makes you fit for the world of Renz.

## Efficient processes

With the Renz Digital Platform, processes become lean - for more speed in everyday life and even more successful transactions. Various tools such as elnfo or eConfigPro provide for the simple

configuration of letter and parcel box systems and make status tracking possible.